



VESPER ROAD

LEEDS, LS5 3NU

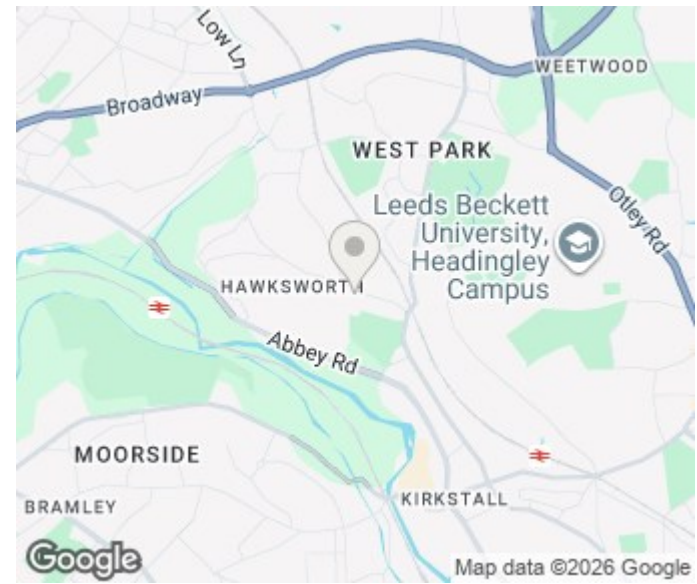
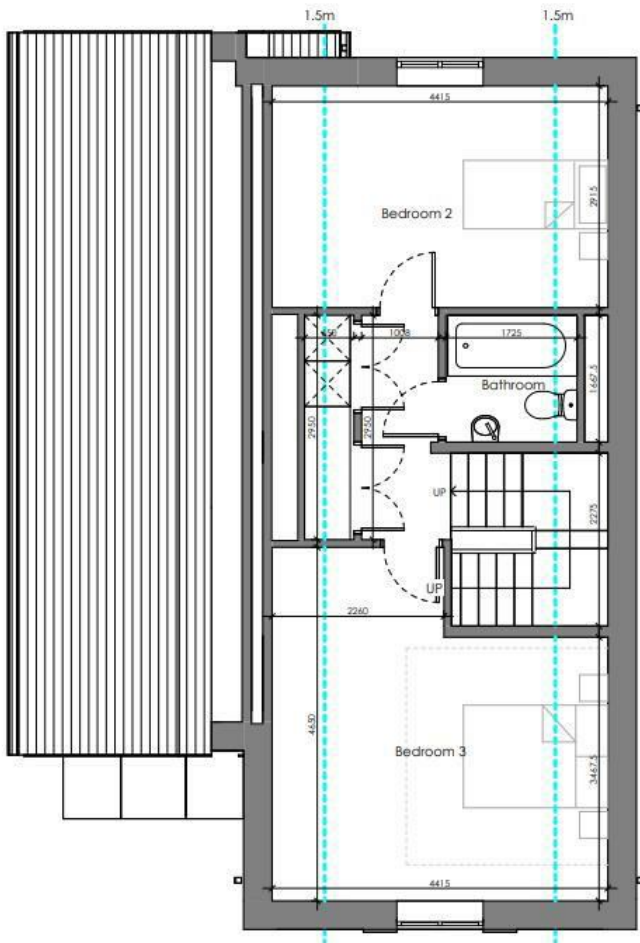
£450,000
FREEHOLD

Welcome to Abbey Rise View - this new development comprises of 2 high specification bungalows, in the heart of Kirkstall, Leeds. With optional extras and selections available for bespoke luxury, this opportunity is one not to be missed!

ANTICIPATED BUILD COMPLETION OF JUNE 2026

MONROE

SELLERS OF THE FINEST HOMES



Energy Efficiency Rating		
	Current	Potential
Very energy efficient - lower running costs		
(92 plus) A		
(81-91) B		
(69-80) C		
(55-68) D		
(39-54) E		
(21-38) F		
(1-20) G		
Not energy efficient - higher running costs		
England & Wales	EU Directive 2002/91/EC	

Agents Note: Whilst every care has been taken to prepare these particulars, they are for guidance purposes only. All measurements are approximate and are for general guidance purposes only and whilst every care has been taken to ensure their accuracy, they should not be relied upon and potential buyers/tenants are advised to recheck the measurements

Land & New Homes
 1-3 The Avenue
 Alwoodley
 Leeds
 West Yorkshire
 LS17 7BD

0113 350 1444
 landandnewhomes@monroestateagents.com
 www.monroestateagents.com

MONROE

SELLERS OF THE FINEST HOMES